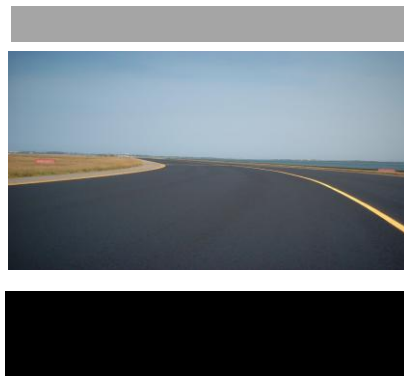


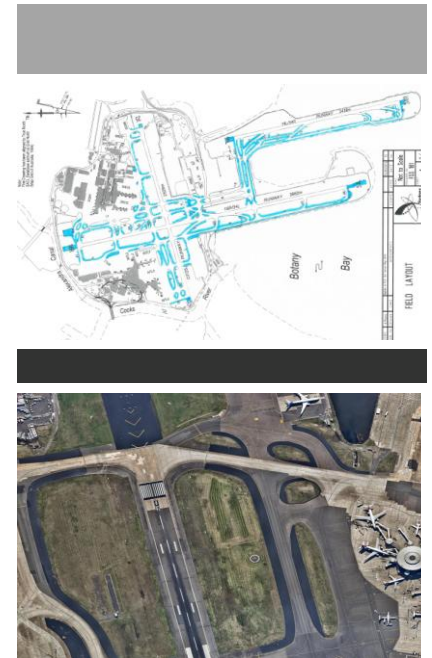


Sydney Airport SRS SealCoat

Location:
Sydney, NSW
Project Date:
January 2016
Project Duration:
30 Days
Contract Type:
Lump sum
Contract:
294,000 m²



Project Sheet



Overview

Sydney Airport Corporation (SACL) chose SRS SealCoat to prolong the life of its flexible pavements by sealing surface cracking and voids. SRS SealCoat effectively forms a barrier on the surface of the flexible pavement which inhibits surface water from penetrating into the pavement and also protects the bitumen within the surface asphalt layer from further degradation by UV light. The areas to be treated were typically non-trafficable by aircraft and were generally in shoulder areas of the runway and taxiway system or within the runway end and safety area (RESA).

The final results:

- Permeability reduced.
- Extended pavement life.
- Fast application.
- No disruption to airside movements.

Scope

SRS SealCoat was applied to 294,000 square meters of asphalt pavement on the taxiway shoulders and runway RESA over 30 night shifts. No line marking was to be removed so spraying needed to be within the existing lines. Also all airfield light fittings and other structures needed to be protected during the works.

Project Challenges

The most significant challenge on this project was completing the works during curfew hours and making sure that the works were returned to a serviceable condition at the end of each shift. Spraying at night meant that it was taking up to 4 hours to dry so productivity at the start of each shift was critical.

Due to the number of different projects happening at the airport each night, access airside was slow.

How we managed this

SACL and Colas planned this project well and understood the limitations of what was possible to achieve each shift. Manufacturing of the product at our Sydney depot during the day allowed for a crew of two each night to achieve an average of 10,000m² each shift.

Colas have highly experienced crews and supervisors who understand what is required when working airside at airports.

Value Added

Colas worked together with the client to maximize productivity each shift and by working together this enabled the contract to be completed within half the original quoted timeframe.

Colas was able to trial with the client a new pavement drying system that could potentially speed up drying times.